

5

_____ ()

200

(IMO)

7	RT-flex	6RT-flex58T AC600	1	1
8		I7-8700 CPU 16G DDR4 256G 8G DDR5 GTX10 20	2	1
9		I7-8700 CPU 16G DDR4 256G 11G DDR6 GTX 20	1	1
10		I7-8700 CPU 16G DDR4 256G 11G DDR6 GTX 20	1	1
11		150	1	
12			1	2
13		LED	1	
14		8 1	1	
15	/	4	1	

1

1.

1.1

(IMO)

MAN B&W ME-C9.2 30

MAN 7S80ME

VR

M-800

S

()

C02

K-Chief 600

6RT-flex58T

AC600

K-Chief 600

MAN B&W

WARTSILA

M-800

AC600

1.2

1

2

3

4

5

6

7

8

1.3

1

VR

1

1		6 I7-8700 CPU 16G DDR4 256G GTX10 20 8G DDR5	1

2		13 3 1	2 1	2 2	2 2	1
3		CPU 16G DDR4 IPS 90HZ	256G 1 110	8G DDR5 40	I7-8700 GTX 20 3840× 2160 2880× 1600	1套
4		1 1	ME	7S80ME-C9. X 2	MAN B&W 7S80ME-C MK9. 2 7 / 800/3450mm 72rpm 17.3bar 42,700kJ/kg 42700kJ/kg L. C. V. 11kW× 1760rpm 10200mm	1套

15.6 1920× 1080
I7 8750 CPU 16G 2070 8G 250G SDD+1

		ME 30	MAN B&W ME-C9. 2 () () ()	
7	RT-flex		AC600 6RT-flex58T 2015	1



1

1.5

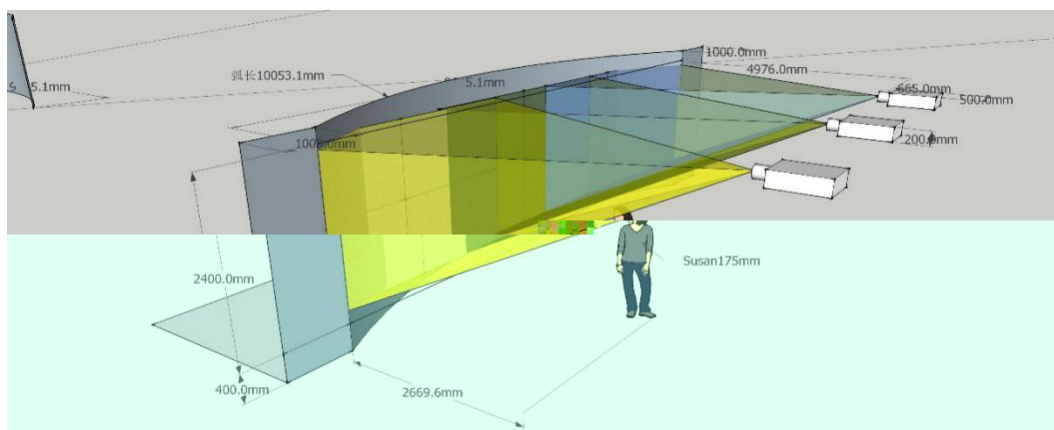
	1	+1	(HTC VIVE PRO)		
		1		7-8700 CPU	16G DDR4	256G
	8G DDR5		GTX 20			40
	3840× 2160		IPS			
	1	(HTC VIVE PRO)			2880
× 1600	90HZ		110			



2

1.6

3





1		1920× 1200	2
2			1
3			1
4			1
5		30	1
6			30
7		1 2	1
8			1

1

2

1920× 1200

15.7-91.1KHz

24-85Hz

3.5W

20000

1.25X

F=2.0-3.32

f=18.07-22.59mm

1.22-1.53:1

50-300

4:3/16:9/16:10

10.7

()

± 15%

-50%-50%

± 20

± 20

1× HDMI 1× DVI-D 1× VGA In 1× HDBaseT 1× 3G-SDI

1× HDMI Out 1× VGA Out Monitor Out 1× 3D SYNC Out

1× RS232 (D-sub 9 pin) (PC Control) 1× Wred in (3.5mmphone jack)

(Remote In) 1× USB type A (for WFi dongle purpose) 1× Mini USB (for LAN

FW upgrade only) (Service) 1× IR Receiver (On the Front side and Top side)

1× RJ45 (LAN)

560W

0.5W

AC100-240V± 10% 50/60Hz

2

1

•

•

16 32

" "

•

90

•

4-40

Bezier

0.5 1.0 4.0 8.0

•

256

ColorRemap

•

•

3

2.4

8-10

144°

4

1

I7-8700 CPU

16G DDR4

256GB

8GB

5

1

55Hz-20KHz -10dB

150W

450W

90dB/2.83V/1m

2.5kHz/15kHz

6

30

34%
16.5%
>1 200
75

1.7

1.7.1

()

CO₂) ()
)

1.7.2

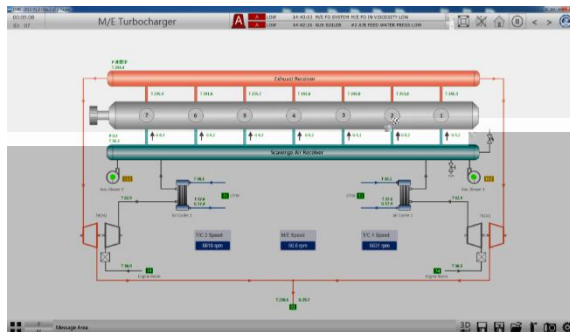
MAN ME

) / / / (MDO HFO

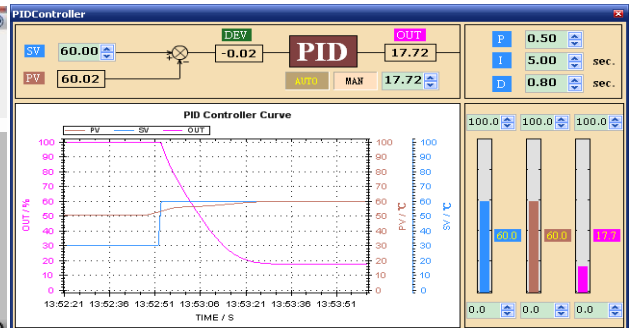
(CO₂)

1920× 1080

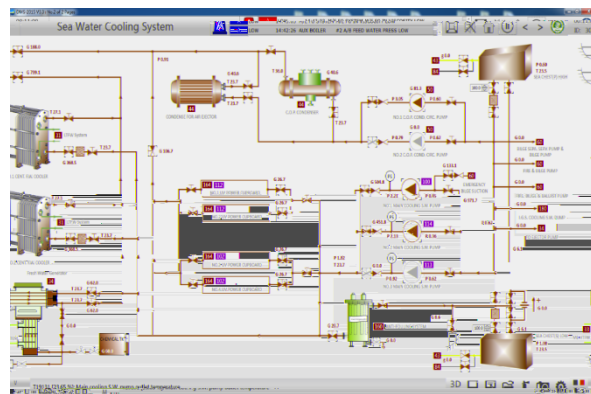
2560× 1440 3840× 2160



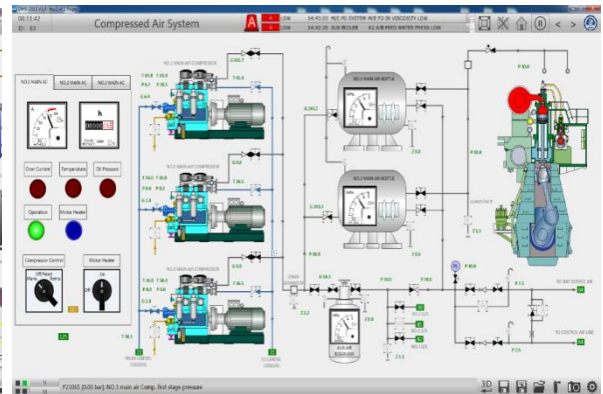
5



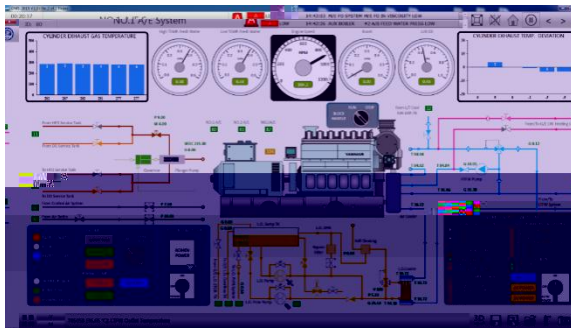
6 PID



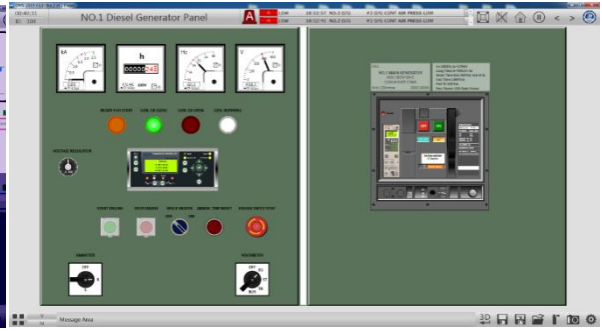
7



8



9 #1



10 #1

1.7.3

ME 30

(

)

()

()

()

SCR

ICCP

MGPS

1

2

)

(

(CO₂())

13

14

1.8

1.8.1

1

ME

7S80ME-C9. X

1

2

1.8.2

MAN B&W 7S80ME-C MK9.2

7

/

800/3450 mm

30bar

25190

kW× 72rpm

20150kW×

67rpm

17.3bar

140bar

61

42,700kJ/kg

159.4g/kW.h+6% at 42700kJ/kg L. C. V.

5.4m³/sec× 5.6kPa

11kW

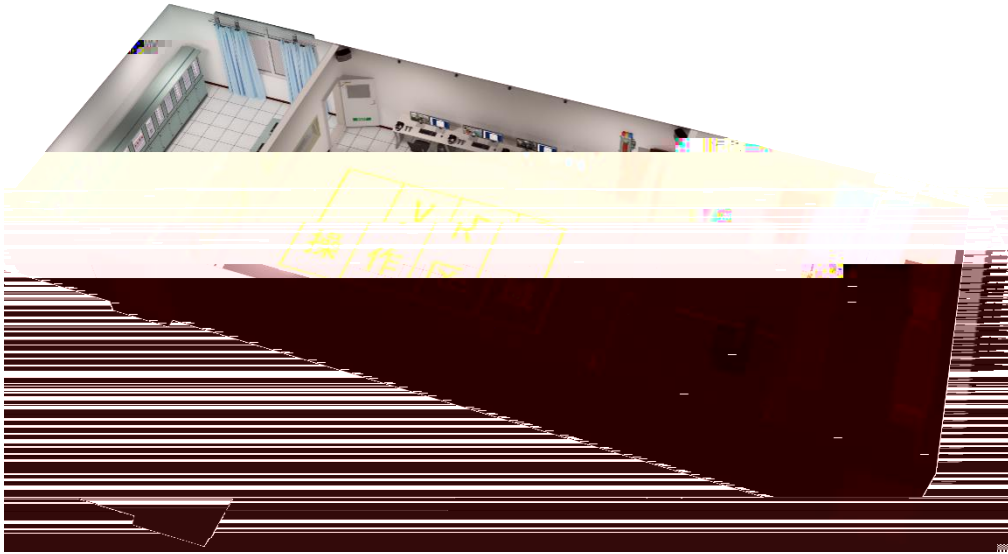
× 1760 rpm

4

-

VR

VR



17

AC220V

AC380V